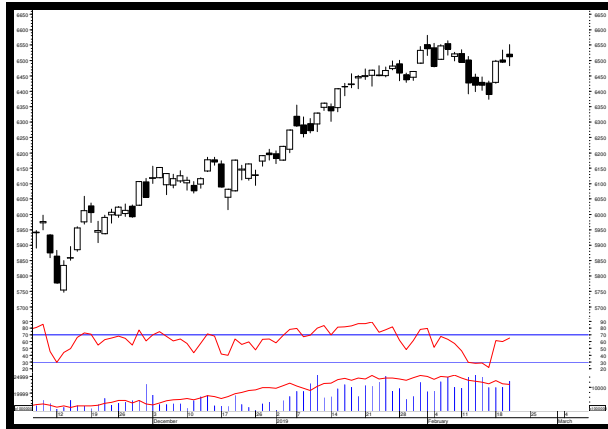


MARKET VIEW

COMPOSITE



Sumber: MetaStock

IHSG melemah di perdagangan kemarin walaupun hanya sebesar 0.058% atau 3.15 poin di level 6,494.67. Minat jual asing juga tercatat masih mendukung terkoreksinya IHSG di perdagangan kemarin sebesar Rp.618.02 miliar. Dan dari sekitar 574 saham yang kemarin aktif di perdagangan sekitar 243 saham menguat, 199 saham terkoreksi, dan 132 saham tidak mengalami perubahan. IHSG diperkirakan masih akan berfluktuatif dikisaran:

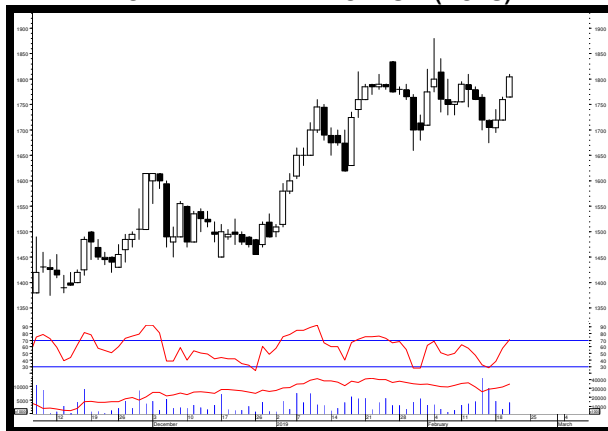
Support : 6,445.27  
Resistance : 6,548.36

Close	Point	%Change	52 Weeks Return	Market Caps
6,494.67	-3.15	-0.05%	-0.17%	7,383.82
Active Stock		Trading Volume		Trading Value
Up	Down	Unchange		
243	199	132	13.55	8.27

Sumber: IQPlus

STOCKS ANALYSIS

ACE HARDWARE INDONESIA (ACES)



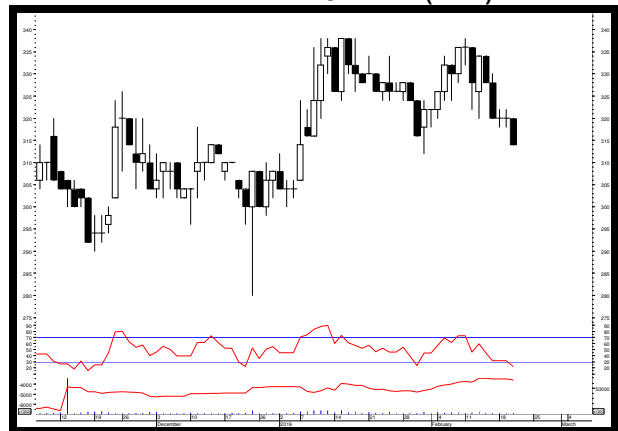
Sumber: MetaStock

Rekomendasi: Trading Buy

Resistance	2	:	1835
	1	:	1810
Support	1	:	1765
	2	:	1740

Masih berpeluang untuk menguat kembali menguji level 1860 – 1880 – 1960 sebagai target sementara selama harga masih bertahan di atas level 1800.

INTILAND DEVELOPMENT (DILD)



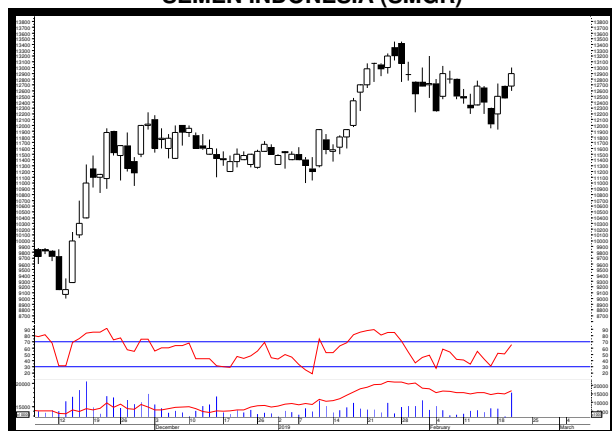
Sumber: MetaStock

Rekomendasi: Buy on Weakness

Resistance	2	:	322
	1	:	320
Support	1	:	314
	2	:	312

Saat ini harga mendekati area jenuh jual (*oversold*). Namun selama masih bertahan di bawah level 316 masih berpeluang untuk menguji level 304 sebagai target koreksi sementara.

**SEMEN INDONESIA (SMGR)**



Sumber: MetaStock

**Rekomendasi: Trading Buy**

Resistance	2	:	13200
	1	:	13000
Support	1	:	12600
	2	:	12475

Trading range saat ini dikisaran level 12025 – 13200 dengan target terdekat sementara di level 13925 bila harga berhasil bertahan di atas level 13200.

**SRI REJEKI ISMAN (SRIL)**



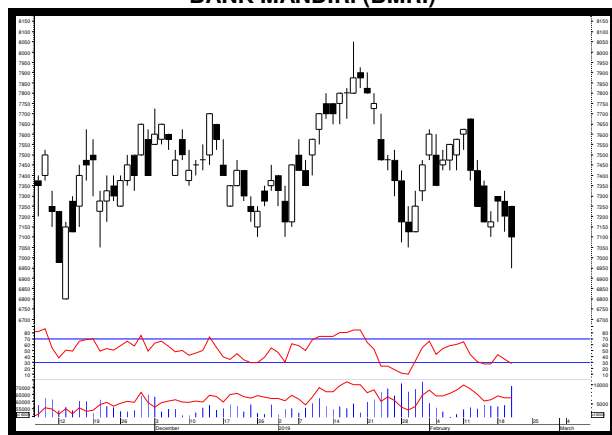
Sumber: MetaStock

**Rekomendasi: Trading Sell**

Resistance	2	:	342
	1	:	340
Support	1	:	332
	2	:	330

Trading range saat ini masih dikisaran level 332 – 348. Bila harga melemah dan bertahan di bawah level 332 membuka peluang untuk menguji level 322 – 316 – 302 sebagai target koreksi sementara.

**BANK MANDIRI (BMRI)**



Sumber: MetaStock

**Rekomendasi: Trading Sell**

Resistance	2	:	7325
	1	:	7250
Support	1	:	6950
	2	:	6800

Selama harga masih bertahan di bawah 7125 masih berpeluang untuk menguji level 6800 – 6525 sebagai target koreksi sementara.

**TELEKOMUNIKASI INDONESIA (TLKM)**



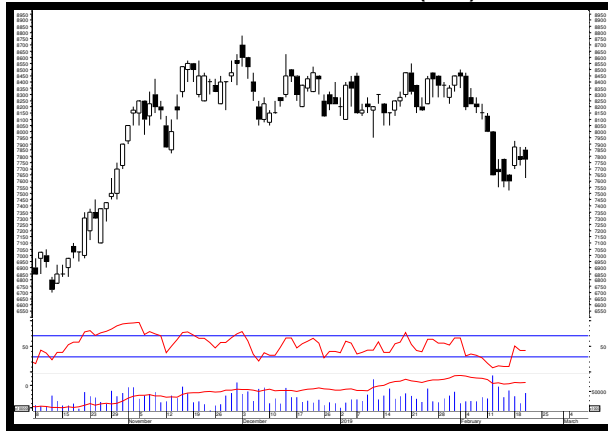
Sumber: MetaStock

**Rekomendasi: Trading Sell**

Resistance	2	:	3980
	1	:	3940
Support	1	:	3830
	2	:	3800

Trading range saat ini masih dikisaran level 3740 – 3930. Target terdekat 4020 bila harga berhasil bertahan di atas 3930. Namun bila harga terus melemah dan bertahan di bawah 3740 membuka peluang untuk menguji level 3620 sebagai target koreksi sementara.

**ASTRA INTERNATIONAL (ASII)**



Sumber: MetaStock

**Rekomendasi: Trading Sell**

Resistance	2	:	7925
	1	:	7875
Support	1	:	7625
	2	:	7525

Selama harga masih bertahan di bawah 8100 masih berpeluang untuk menguji level 7425 sebagai target koreksi selanjutnya.

**CHAROEN POKPHAND INDONESIA (CPIN)**



Sumber: MetaStock

**Rekomendasi: Trading Buy**

Resistance	2	:	7625
	1	:	7600
Support	1	:	7350
	2	:	7275

Trading range saat ini dikisaran level 7325 – 8000 dengan target koreksi sementara dikisaran level 7150 – 6875 bila harga terus melemah dan bertahan di bawah 7325.

## LQ45 TRADING GUIDE

Ticker	Closing	Support	Pivot	Resistance	Trend		Daily Beta	Daily Volatility	
					Daily	Weekly		Last	Average
<b>MINING</b>									
<b>Coal, Oil &amp; Gas, Metal &amp; Other Resources</b>									
ADRO	1,345	1,285	1,327	1,350	Bullish	Bullish	1.25	5.06%	3.46%
INDY	1,955	1,925	1,955	1,985	Bullish	Bullish	1.03	3.12%	5.22%
ITMG	21,975	21,650	21,875	22,000	Bullish	Bullish	1.04	1.62%	3.77%
PTBA	4,160	4,110	4,170	4,240	Bullish	Bullish	0.90	3.16%	3.47%
ELSA	384	384	387	394	Bullish	Bullish	1.15	2.60%	3.91%
MEDC	995	990	1,000	1,015	Bullish	Bullish	1.07	2.53%	5.07%
ANTM	1,060	1,040	1,063	1,090	Bullish	Bullish	1.12	4.81%	3.64%
INCO	3,740	3,670	3,723	3,760	Bullish	Bullish	1.25	2.45%	3.71%
<b>BASIC INDUSTRY</b>									
<b>Cement, Chemistry, &amp; Others</b>									
INTP	19,500	18,250	19,125	19,625	Bullish	Bullish	1.41	7.53%	3.25%
SMGR	12,900	12,600	12,833	13,000	Bullish	Bullish	1.29	3.17%	2.97%
WSBP	386	380	385	388	Bearish	Bearish	0.93	2.11%	3.03%
BRPT	2,860	2,820	2,853	2,880	Bearish	Bullish	0.96	2.13%	3.85%
TPIA	5,350	5,350	5,375	5,425	Bearish	Bullish	0.62	1.40%	2.50%
CPIN	7,575	7,350	7,508	7,600	Bullish	Bullish	1.19	3.40%	3.64%
INKP	12,250	11,950	12,150	12,250	Bullish	Bullish	1.20	2.51%	4.71%
TKIM	11,700	11,450	11,650	11,800	Bullish	Bearish	1.17	3.06%	5.31%
<b>MISC.INDUSTRY</b>									
<b>Automotive &amp; Manufacturing of Garments</b>									
ASII	7,775	7,625	7,758	7,875	Bullish	Bullish	1.19	3.28%	2.27%
SRIL	334	332	335	340	Bearish	Bearish	0.68	2.41%	3.82%
<b>CONSUMER GOODS</b>									
<b>Foods, Cigarette, Pharmacy &amp; Others</b>									
ICBP	10500	10350	10458	10525	Bearish	Bearish	1.02	1.69%	2.32%
INDF	7,500	7,425	7,500	7,575	Bearish	Bearish	1.17	2.02%	2.29%
GGRM	83,700	83,025	84,058	85,450	Bearish	Bullish	1.13	2.92%	2.34%
HMSP	3,790	3,720	3,773	3,810	Bullish	Bullish	1.28	2.42%	2.68%
KLBF	1,545	1,530	1,548	1,570	Bearish	Bearish	1.16	2.61%	2.54%
UNVR	50,025	49,900	50,017	50,125	Bullish	Bullish	1.09	0.45%	1.92%
<b>PROPERTY &amp; CONSTRUCTIONS</b>									
BSDE	1,330	1,300	1,325	1,345	Bullish	Bullish	1.30	3.46%	2.87%
PWON	650	640	650	660	Bullish	Bullish	1.31	3.13%	3.56%
ADHI	1,590	1,540	1,573	1,590	Bullish	Bullish	1.10	3.25%	3.17%
PTPP	2,160	2,130	2,170	2,220	Bullish	Bullish	1.35	4.23%	3.53%
WIKA	1,730	1,690	1,727	1,760	Bullish	Bullish	1.25	4.14%	3.27%
WSKT	1,855	1,790	1,835	1,860	Bullish	Bullish	1.28	3.91%	3.36%
<b>INFRASTRUCTURE</b>									
<b>Energy, Telecommunication, Transportation &amp; Highway, Non Building Construction</b>									
PGAS	2,490	2,470	2,497	2,530	Bullish	Bullish	1.36	2.43%	3.83%
EXCL	2,620	2,550	2,613	2,670	Bullish	Bullish	1.25	4.71%	4.09%
TLKM	3,870	3,830	3,880	3,940	Bullish	Bearish	1.14	2.87%	2.12%
JSMR	4,990	4,970	5,037	5,150	Bearish	Bearish	1.14	3.62%	2.57%
<b>FINANCE</b>									
<b>Bank</b>									
BBCA	27,500	27,200	27,558	27,975	Bullish	Bullish	0.95	2.85%	1.85%
BBNI	8,825	8,700	8,808	8,900	Bearish	Bearish	1.31	2.30%	2.51%
BBRI	3,890	3,860	3,897	3,940	Bullish	Bullish	1.36	2.07%	2.16%
BBTN	2,500	2,480	2,520	2,580	Bearish	Bearish	1.45	4.03%	3.21%
BMRI	7,100	6,950	7,100	7,250	Bearish	Bearish	1.38	4.32%	2.38%
<b>TRADE &amp; SERVICE</b>									
<b>Wholesale, Media, &amp; Investment Company</b>									
AKRA	5,725	5,600	5,717	5,825	Bullish	Bullish	1.05	4.02%	3.05%
UNTR	26,000	25,650	26,000	26,350	Bullish	Bullish	1.27	2.73%	3.04%
ERAA	2,210	2,190	2,223	2,270	Bullish	Bullish	1.13	3.65%	5.14%
LPPF	5,925	5,825	5,975	6,175	Bearish	Bearish	1.21	6.01%	4.15%
MNCN	995	935	978	1,005	Bullish	Bullish	1.09	7.49%	3.79%
SCMA	1,850	1,795	1,832	1,850	Bullish	Bullish	1.16	3.06%	3.55%

Sumber: Lautandhana Securindo

**Note:**

- Bila harga OPEN pada perdagangan hari ini lebih besar (kecil) daripada nilai PIVOT, maka terdapat kemungkinan saham tersebut akan berpotensi menguat (melemah) pada perdagangan hari ini.
- Beta diatas 1 ( $b > 1$ ) mengindikasikan adanya kemungkinan saham tersebut bergerak melebihi pergerakan pasar.  
(jika kondisi pasar (IHSG) dalam keadaan *bullish* (*bearish*) maka saham tersebut kemungkinan akan naik (turun) melebihi kenaikan (penurunan) pasar)
- Bila trend daily dan weekly menunjukkan bullish (bearish), maka besar kemungkinan saham tersebut akan menguat (melemah)
- Daily Volatility* merupakan historis dari keuntungan maksimum maupun kerugian maksimum yang dapat diterima investor dalam 1 hari perdagangan.  
(**Last:** historis volatilitas pada perdagangan kemarin, **Average:** rata-rata volatilitas per hari selama 1 tahun perdagangan)



Gedung The City Tower 7<sup>th</sup> floor  
Jl. MH Thamrin No.81  
Jakarta Pusat 10310  
T +62 21 2395 1000  
F +62 21 2395 1099

## EQUITY DIVISION

### Jakarta Branch

#### Pluit

Kawasan CBD Pluit Blok A No.20  
Jl. Pluit Selatan Raya No.1  
Jakarta Utara 14440  
T +6221 6667 5345  
F +6221 6667 5234

#### Kelapa Gading

Sentra Bisnis Artha Gading  
Jl. Boulevard Artha Gading Blok A6B Kav.7  
Kelapa Gading Barat  
Jakarta Utara 14240  
T +6221 4585 6402  
F +6221 4587 3961

#### Puri

Rukan Grand Taman Aries Niaga Blok G1 No.11  
Jl. Taman Aries Kembangan  
Jakarta Barat 11620  
T +6221 2931 9515  
F +6221 2931 9516

### Others Branch

#### Bandung

Komplek Paskal Hypersquare  
Blok C No. 15, Kebon Jeruk  
Bandung 40181  
T +6222 8606 1027  
F +6222 8606 0684

#### Medan

Jl. Kartini No.5  
Medan 20152  
T +6261 451 8855  
F +6261 455 1836

### Surabaya Branch

Ruko Permata Bintoro  
Jl. Ketampon Kav.1-2  
Surabaya  
T +6231 562 2555  
F +6231 567 1398

---

## DISCLAIMER

This report has been prepared by PT. Lotus Andalan Sekuritas on behalf of itself and its affiliated companies and is provided for information purposes only. Under no circumstances is it to be used or considered as an offer to sell, or a solicitation of any offer to buy. This report has been produced independently and the forecasts, opinions and expectations contained herein are entirely those of PT. Lotus Andalan Sekuritas.

While all reasonable care has been taken to ensure that information contained herein is not untrue or misleading at the time of publication, PT. Lotus Andalan Sekuritas makes no representation as to its accuracy or completeness and it should not be relied upon as such. This report is provided solely for the information of clients of PT. Lotus Andalan Sekuritas who are expected to make their own investment decisions without reliance on this report. Neither PT. Lotus Andalan Sekuritas nor any officer or employee of PT. Lotus Andalan Sekuritas accept any liability whatsoever for any direct or consequential loss arising from any use of this report or its contents. PT. Lotus Andalan Sekuritas and/or person connected with it may have acted upon or used the information herein contained, or the research or analysis on which it is based, before publication.