

MARKET VIEW

COMPOSITE



Sumber: MetaStock

IHSG berhasil menguat kembali di perdagangan kemarin sebesar 0.57% atau 35.90 poin di level 6,355.90. Minat beli asing juga tercatat mulai mendukung penguatan IHSG di perdagangan kemarin sebesar Rp.213.06 miliar. Dan dari sekitar 504 saham yang kemarin aktif di perdagangan sekitar 217 saham menguat, 151 saham terkoreksi, dan 136 saham tidak mengalami perubahan. Dan secara keseluruhan pergerakan IHSG di perdagangan hari ini diperkirakan masih akan berfluktuatif dikisaran:

Support : 6,286.62
Resistance : 6,419.09

Close	Point	%Change	52 Weeks Return	Market Caps
6,355.90	35.90	0.57%	12.93%	7,089.43
Active Stock			Trading Volume	Trading Value
Up	Down	Unchange	9.47	7.47
217	151	136		

Sumber: IQPlus

STOCKS ANALYSIS

ADARO ENERGY (ADRO)



Sumber: MetaStock

Rekomendasi: Trading Buy

Resistance	2	:	2210
	1	:	2190
Support	1	:	2110
	2	:	2080

Menguatnya harga di perdagangan kemarin merubah pola jangka pendek sementara. *Trading range* saat ini dikisaran level 1995 – 2220 dengan target sementara di level 2360 bila harga berhasil bertahan di atas level 2220.

BANK MANDIRI (BMRI)



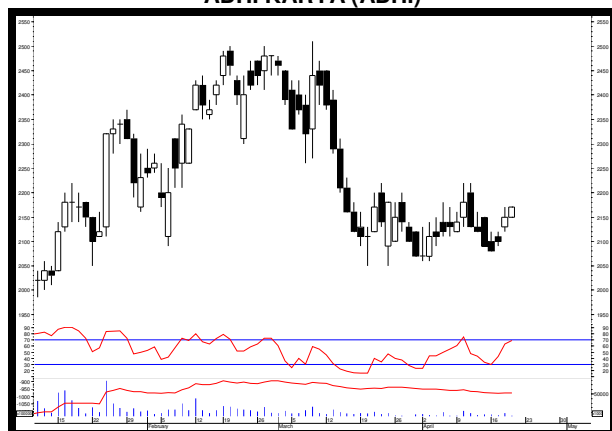
Sumber: MetaStock

Rekomendasi: Trading Buy

Resistance	2	:	8125
	1	:	8075
Support	1	:	7975
	2	:	7900

Resistance kuat sementara dikisaran level 8075. Dan bila harga berhasil menguat dan bertahan di atas 8075 membuka peluang untuk menguji level 8400 – 8600 sebagai target sementara.

ADHI KARYA (ADHI)



Sumber: MetaStock

Rekomendasi: Trading Buy

Resistance	2	:	2180
	1	:	2170
Support	1	:	2150
	2	:	2120

Trading range sementara masih dikisaran level 2070 – 2180. Target koreksi dikisaran level 2000 – 1890 bila harga terus melemah dan bertahan di bawah 2070. Namun bila harga berhasil menguat dan bertahan di atas 2180 membuka peluang untuk menguji level 2250 – 2360 sebagai target sementara.

INDOFOOD SUKSES MAKMUR (INDF)



Sumber: MetaStock

Rekomendasi: Trading Buy

Resistance	2	:	7175
	1	:	7150
Support	1	:	7050
	2	:	7025

Trading range sementara masih dikisaran level 7000 – 7350. Bila harga kembali melemah dan bertahan di bawah level 7000 membuka peluang untuk menguji level 6775 sebagai target koreksi sementara.

ASTRA INTERNATIONAL (ASII)



Sumber: MetaStock

Rekomendasi: Trading Buy

Resistance	2	:	7725
	1	:	7700
Support	1	:	7525
	2	:	7475

Trading range sementara masih dikisaran level 7525 – 7950. Waspada bila harga melemah dan bertahan di bawah level 7525 karena membuka peluang untuk menguji kisaran level 7250 – 7100 sebagai target koreksi sementara berdasarkan pola fibonacci dan head and shoulders.

PERUSAHAAN GAS NEGARA (PGAS)



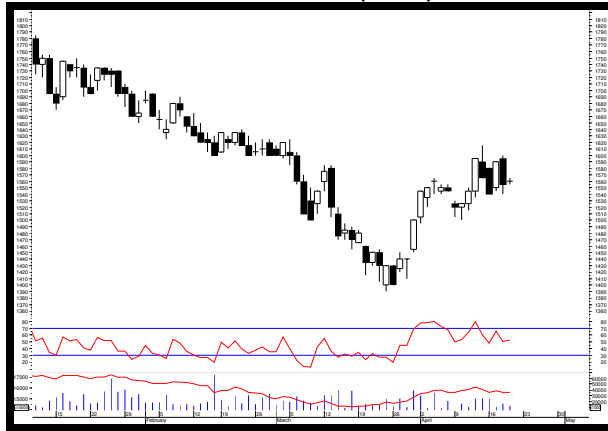
Sumber: MetaStock

Rekomendasi: Buy on Weakness

Resistance	2	:	2250
	1	:	2230
Support	1	:	2170
	2	:	2160

Saat ini harga masih berada di area jenuh jual (oversold). Namun selama harga masih bertahan di bawah level 2210 masih berpeluang untuk menguji level 2080 sebagai target koreksi sementara.

KALBE FARMA (KLBF)



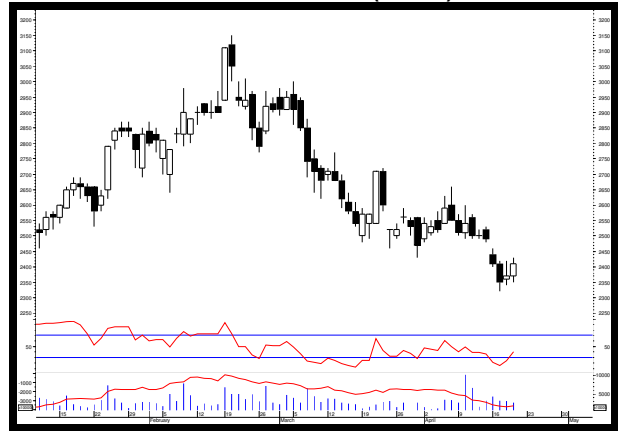
Sumber: MetaStock

Rekomendasi: Trading Buy

Resistance	2	:	1600
	1	:	1560
Support	1	:	1555
	2	:	1540

Trading range sementara masih dikisaran level 1520 – 1595. Target koreksi sementara dikisaran level 1475 – 1440 bila harga terus melemah dan bertahan di bawah level 1520. Namun bila harga berhasil menguat dan bertahan di atas level 1595 membuka peluang untuk menguji level 1640 sebagai target sementara.

WASKITA KARYA (WSKT)



Sumber: MetaStock

Rekomendasi: Buy on Weakness

Resistance	2	:	2460
	1	:	2430
Support	1	:	2350
	2	:	2340

Saat ini harga masih berada di area jenuh jual (*oversold*) dan target koreksi di level 2320 telah tercapai. Target koreksi selanjutnya dikisaran level 2230 selama harga masih bertahan di bawah level 2470.

LQ45 TRADING GUIDE

Ticker	Closing	Support	Pivot	Resistance	Trend		Daily Beta	Daily Volatility	
					Daily	Weekly		Last	Average
AGRICULTURE									
Plantation & Others									
SSMS	1,425	1,415	1,427	1,440	Bearish	Bearish	0.51	1.77%	2.50%
MINING									
Coal, Oil & Gas, Metal & Other Resources									
ADRO	2,100	2,080	2,103	2,130	Bearish	Bearish	1.25	2.40%	3.28%
BUMI	278	276	280	286	Bullish	Bullish	1.41	3.62%	7.12%
PTBA	3,480	3,460	3,490	3,530	Bullish	Bullish	1.13	2.02%	3.46%
ANTM	885	860	878	890	Bullish	Bullish	0.98	3.49%	3.43%
INCO	3,380	3,240	3,353	3,440	Bullish	Bullish	1.14	6.17%	3.56%
BASIC INDUSTRY									
Cement & Others									
INTP	18,800	18,400	18,725	18,975	Bullish	Bearish	1.26	3.13%	2.85%
SMGR	9,925	9,875	9,933	10,000	Bearish	Bearish	1.12	1.27%	2.59%
TPIA	6,375	6,250	6,333	6,375	Bullish	Bullish	0.59	2.00%	2.06%
BRPT	2,480	2,460	2,483	2,510	Bearish	Bearish	0.86	2.03%	3.85%
MISC.INDUSTRY									
Otomotif & Manufacturing of Garments									
ASII	7,525	7,475	7,542	7,625	Bearish	Bearish	1.31	2.01%	2.01%
SRIL	336	336	341	352	Bullish	Bullish	0.83	4.76%	4.31%
CONSUMER GOODS									
Foods, Cigarette, Pharmacy & Others									
ICBP	8325	8275	8342	8425	Bearish	Bearish	1.09	1.81%	2.18%
INDF	3,620	7,025	7,075	7,150	Bearish	Bearish	1.13	1.78%	2.04%
UNVR	51,575	51,100	51,525	51,900	Bullish	Bullish	0.98	1.57%	1.65%
HMSP	4,120	4,070	4,107	4,130	Bullish	Bullish	1.28	1.47%	2.43%
GGRM	76,875	75,000	76,250	76,875	Bullish	Bullish	1.32	2.50%	2.26%
KLBF	1,555	1,540	1,565	1,600	Bearish	Bearish	1.07	3.90%	2.21%
PROPERTY & CONSTRUCTIONS									
BSDE	1,830	1,790	1,817	1,830	Bullish	Bullish	1.31	2.23%	2.41%
LPKR	472	472	475	482	Bearish	Bearish	0.97	2.12%	3.15%
PWON	625	620	625	630	Bullish	Bullish	1.32	1.61%	3.26%
ADHI	2,150	2,120	2,147	2,170	Bullish	Bullish	1.17	2.36%	3.16%
PTPP	2,780	2,750	2,777	2,800	Bearish	Bearish	1.09	1.82%	3.06%
WIKA	1,690	1,680	1,693	1,710	Bearish	Bearish	1.22	1.79%	2.96%
WSBP	414	414	417	424	Bearish	Bearish	1.00	2.42%	2.99%
WSKT	2,370	2,340	2,377	2,420	Bearish	Bearish	1.23	3.42%	3.06%
INFRASTRUCTURE									
Energy, Telecommunication, Transportation & Highway, Non Building Construction									
PGAS	2,170	2,160	2,193	2,250	Bearish	Bearish	1.32	4.17%	3.52%
JSMR	4,560	4,500	4,540	4,560	Bearish	Bearish	1.10	1.33%	2.38%
EXCL	2,510	2,500	2,553	2,650	Bearish	Bearish	1.18	6.00%	3.51%
TLKM	3,770	3,710	3,750	3,770	Bullish	Bullish	1.19	1.62%	1.85%
TRAM	370	368	383	412	Bearish	Bearish	0.84	11.96%	9.08%
INDY	3,690	3,590	3,633	3,690	Bearish	Bearish	1.02	2.79%	5.48%
FINANCE									
Bank & Other Financing									
BBCA	22,975	22,725	22,892	22,975	Bullish	Bearish	0.94	1.10%	1.73%
BBNI	8,775	8,700	8,825	9,000	Bearish	Bullish	1.17	3.45%	2.28%
BBRI	3,660	3,620	3,647	3,660	Bullish	Bullish	1.26	1.10%	1.89%
BBTN	3,620	3,560	3,613	3,660	Bearish	Bearish	1.08	2.81%	2.80%
BJBR	2,050	2,050	2,057	2,070	Bearish	Bullish	0.74	0.98%	4.22%
BMRI	8,050	7,900	8,000	8,050	Bearish	Bearish	1.21	1.90%	2.07%
TRADE & SERVICE									
Investment Company & Wholesale									
AKRA	5,775	5,600	5,717	5,775	Bullish	Bullish	1.09	3.13%	2.88%
UNTR	36,800	36,325	36,875	37,500	Bullish	Bullish	1.54	3.23%	3.04%
LPPF	10,475	10,350	10,475	10,600	Bearish	Bearish	1.19	2.42%	3.49%
BMTR	575	575	582	595	Bearish	Bearish	1.05	3.48%	3.95%
MNCN	1,385	1,375	1,397	1,430	Bearish	Bearish	1.10	4.00%	3.50%
SCMA	2,640	2,620	2,663	2,730	Bearish	Bearish	1.02	4.20%	3.35%
MYRX	145	145	146	148	Bearish	Bearish	0.81	2.07%	3.91%

Sumber: Lautandhana Securindo

Note:

1. Bila harga OPEN pada perdagangan hari ini lebih besar (kecil) daripada nilai PIVOT, maka terdapat kemungkinan saham tersebut akan berpotensi menguat (melemah) pada perdagangan hari ini.
2. Beta diatas 1 (b>1) mengindikasikan adanya kemungkinan saham tersebut bergerak melebihi pergerakan pasar. (jika kondisi pasar (IHSG) dalam keadaan *bullish (bearish)* maka saham tersebut kemungkinan akan naik (turun) melebihi kenaikan (penurunan) pasar)
3. Bila trend daily dan weekly menunjukkan *bullish (bearish)*, maka besar kemungkinan saham tersebut akan menguat (melemah)
4. *Daily Volatility* merupakan historis dari keuntungan maksimum maupun kerugian maksimum yang dapat diterima investor dalam 1 hari perdagangan. (**Last:** historis volatilitas pada perdagangan kemarin, **Average:** rata-rata volatilitas per hari selama 1 tahun perdagangan)



Wisma Keia 15th floor
 Jl. Jendral Sudirman Kav. 3
 Jakarta 10220
 T +62 21 5785 1818
 F +62 21 5785 1637

EQUITY DIVISION

**Jakarta Branch
 Pluit**

Kawasan CBD Pluit Blok A No.20
 Jl. Pluit Selatan Raya No.1
 Jakarta Utara 14440
 T +6221 6667 5345
 F +6221 6667 5234

Kelapa Gading

Sentra Bisnis Artha Gading
 Jl. Boulevard Artha Gading Blok A6B Kav.7
 Kelapa Gading Barat
 Jakarta Utara 14240
 T +6221 4585 6402
 F +6221 4587 3961

Puri

Rukan Grand Taman Aries Niaga Blok G1 No.11
 Jl. Taman Aries Kembangan
 Jakarta Barat 11620
 T +6221 2931 9515
 F +6221 2931 9516

**Others Branch
 Bandung**

Komplek Paskal Hypersquare
 Blok C No. 15, Kebon Jeruk
 Bandung 40181
 T +6222 8606 1027
 F +6222 8606 0684

Medan

Jl. Cut Mutia No.15B
 Medan 20152
 T +6261 451 8855
 F +6261 455 1833

Surabaya Branch

Ruko Permata Bintoro
 Jl. Ketampon Kav.1-2
 Surabaya
 T +6231 562 2555
 F +6231 567 1398

DISCLAIMER

This report has been prepared by PT. Lotus Andalan Sekuritas on behalf of itself and its affiliated companies and is provided for information purposes only. Under no circumstances is it to be used or considered as an offer to sell, or a solicitation of any offer to buy. This report has been produced independently and the forecasts, opinions and expectations contained herein are entirely those of PT. Lotus Andalan Sekuritas.

While all reasonable care has been taken to ensure that information contained herein is not untrue or misleading at the time of publication, PT. Lotus Andalan Sekuritas makes no representation as to its accuracy or completeness and it should not be relied upon as such. This report is provided solely for the information of clients of PT. Lotus Andalan Sekuritas who are expected to make their own investment decisions without reliance on this report. Neither PT. Lotus Andalan Sekuritas nor any officer or employee of PT. Lotus Andalan Sekuritas accept any liability whatsoever for any direct or consequential loss arising from any use of this report or its contents. PT. Lotus Andalan Sekuritas and/or person connected with it may have acted upon or used the information herein contained, or the research or analysis on which it is based, before publication.