

MARKET VIEW

COMPOSITE



Sumber: MetaStock

IHSG berhasil menguat di perdagangan kemarin sebesar 0.61% atau 36.99 poin di level 6,106.70. Namun minat jual asing tercatat masih mewarnai pergerakan IHSG di perdagangan kemarin walaupun hanya sebesar Rp.98 miliar. Dan dari sekitar 526 saham yang kemarin aktif di perdagangan sekitar 234 saham menguat, 155 saham terkoreksi, dan 137 saham tidak mengalami perubahan. Dan secara keseluruhan pergerakan IHSG di perdagangan hari ini diperkirakan masih akan berfluktuatif dikisaran:

Support : 6,025.19  
Resistance : 6,183.70

Close	Point	%Change	52 Weeks Return	Market Caps
6,106.70	36.99	0.61%	6.34%	6,841.00
Active Stock			Trading Volume	Trading Value
Up	Down	Unchange	11.23	9.00
234	155	137		

Sumber: IQPlus

STOCKS ANALYSIS

KALBE FARMA (KLBF)



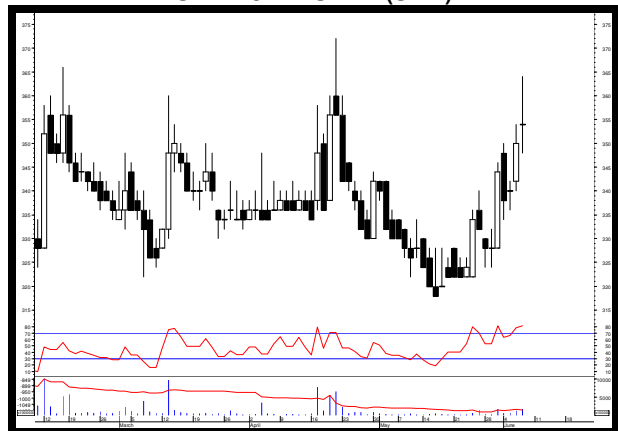
Sumber: MetaStock

Rekomendasi: Sell on Strength

Resistance	2	:	1480
	1	:	1470
Support	1	:	1410
	2	:	1390

Target kedua di level 1470 telah tercapai di perdagangan kemarin dan saat ini harga telah berada di area jenuh beli (*overbought*). Namun selama harga masih bertahan di atas level 1405 masih berpeluang untuk menguji target selanjutnya di level 1500 – 1535.

SRI REJEKI ISMAN (SRIL)



Sumber: MetaStock

Rekomendasi: Sell on Strength

Resistance	2	:	372
	1	:	364
Support	1	:	348
	2	:	340

Trading range saat ini masih dikisaran level 318 – 356 dengan target sementara dikisaran level 382 bila harga berhasil menguat dan bertahan di atas level 356.

**ADARO ENERGY (ADRO)**



Sumber: MetaStock

**Rekomendasi: Sell on Strength**

Resistance	2	:	2060
	1	:	2030
Support	1	:	1980
	2	:	1975

Selama harga masih bertahan di atas level 1950 masih berpeluang untuk menguji target selanjutnya dikisaran level 2160.

**MEDIA NUSANTARA CITRA (MNCN)**



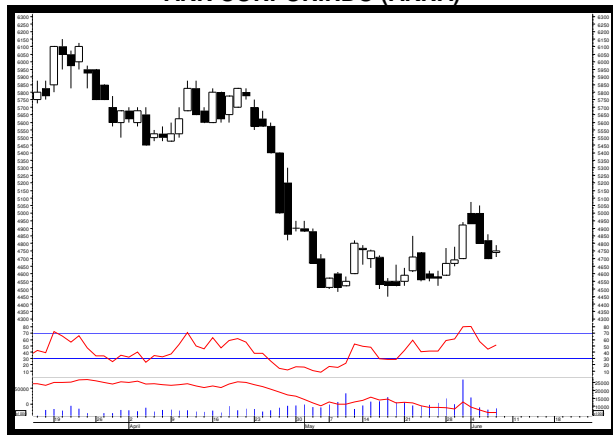
Sumber: MetaStock

**Rekomendasi: Trading Buy**

Resistance	2	:	1240
	1	:	1225
Support	1	:	1185
	2	:	1155

Trading range sementara dikisaran level 1130 – 1260 dengan target sementara di level 1340 bila harga berhasil menguat dan bertahan di atas level 1260.

**AKR CORPORINDO (AKRA)**



Sumber: MetaStock

**Rekomendasi: Trading Buy**

Resistance	2	:	4860
	1	:	4790
Support	1	:	4710
	2	:	4700

Trading range saat ini masih dikisaran level 4510 – 4930. Target terdekat sementara dikisaran level 5200 bila harga berhasil menguat dan bertahan di atas level 4930.

**UNILEVER INDONESIA (UNVR)**



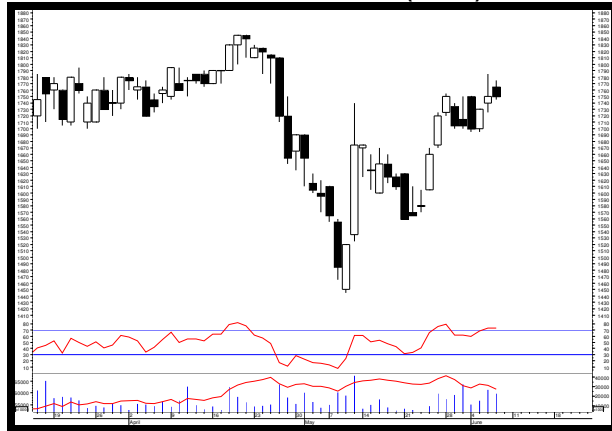
Sumber: MetaStock

**Rekomendasi: Trading Buy**

Resistance	2	:	46900
	1	:	46625
Support	1	:	46200
	2	:	46075

Trading range saat ini masih dikisaran level 45000 – 49450. Target terdekat sementara dikisaran 50725 – 52200 bila harga berhasil menguat dan bertahan di atas level 49450.

**BUMI SERPONG DAMAI (BSDE)**



Sumber: MetaStock

**Rekomendasi: Sell on Strength**

Resistance	2	:	1785
	1	:	1775
Support	1	:	1745
	2	:	1725

Saat ini harga telah berada di area jenuh beli (*overbought*). Namun selama masih bertahan di atas level 1675 masih berpeluang untuk menguji level 1860 sebagai target selanjutnya.

**MATAHARI DEPARTMENT STORE (LPPF)**



Sumber: MetaStock

**Rekomendasi: Trading Buy**

Resistance	2	:	9300
	1	:	9225
Support	1	:	8925
	2	:	8850

*Trading range* saat ini masih dikisaran level 8700 – 9900. Target koreksi sementara dikisaran level 7950 bila harga terus melemah dan bertahan di bawah level 8700.

LQ45 TRADING GUIDE

Ticker	Closing	Support	Pivot	Resistance	Trend		Daily Beta	Daily Volatility	
					Daily	Weekly		Last	Average
<b>AGRICULTURE</b>									
<b>Plantation &amp; Others</b>									
SSMS	1,295	1,190	1,263	1,305	Bullish	Bullish	0.51	9.66%	2.64%
<b>MINING</b>									
<b>Coal, Oil &amp; Gas, Metal &amp; Other Resources</b>									
ADRO	1,990	1,980	2,000	2,030	Bullish	Bullish	1.21	2.53%	3.40%
BUMI	260	258	261	264	Bullish	Bullish	1.36	2.33%	6.97%
PTBA	3,940	3,910	3,950	4,000	Bearish	Bullish	1.04	2.30%	3.50%
ANTM	945	935	962	1,005	Bullish	Bullish	0.91	7.49%	3.48%
INCO	4,170	4,140	4,200	4,290	Bullish	Bullish	1.04	3.62%	3.63%
<b>BASIC INDUSTRY</b>									
<b>Cement &amp; Others</b>									
INTP	16,925	16,925	17,092	17,425	Bearish	Bearish	1.24	2.95%	2.98%
SMGR	8,725	8,575	8,683	8,750	Bearish	Bullish	1.10	2.04%	2.62%
TPIA	5,500	5,425	5,500	5,575	Bearish	Bearish	0.60	2.76%	2.13%
BRPT	2,150	2,150	2,173	2,220	Bullish	Bullish	0.93	3.26%	3.86%
<b>MISC.INDUSTRY</b>									
<b>Otomotif &amp; Manufacturing of Garments</b>									
ASII	6,975	6,950	6,983	7,025	Bearish	Bullish	1.19	1.08%	2.08%
SRIL	354	348	355	364	Bullish	Bullish	0.79	4.60%	4.19%
<b>CONSUMER GOODS</b>									
<b>Foods, Cigarette, Pharmacy &amp; Others</b>									
ICBP	9000	8800	8933	9000	Bullish	Bullish	1.09	2.27%	2.26%
INDF	4,090	7,000	7,092	7,175	Bullish	Bullish	1.11	2.50%	2.13%
UNVR	46,200	46,200	46,342	46,625	Bullish	Bullish	1.04	0.92%	1.73%
HMSP	3,700	3,700	3,723	3,770	Bearish	Bearish	1.34	1.89%	2.56%
GGRM	70,075	68,325	69,733	70,800	Bullish	Bullish	1.27	3.62%	2.28%
KLBF	1,465	1,410	1,448	1,470	Bullish	Bullish	1.07	4.26%	2.33%
<b>PROPERTY &amp; CONSTRUCTIONS</b>									
BSDE	1,750	1,745	1,757	1,775	Bullish	Bullish	1.30	1.72%	2.51%
LPKR	376	374	377	382	Bullish	Bullish	0.95	2.14%	3.20%
PWON	620	590	612	625	Bullish	Bullish	1.36	5.93%	3.41%
ADHI	1,930	1,920	1,932	1,945	Bullish	Bullish	1.10	1.30%	3.16%
PTPP	2,650	2,650	2,660	2,680	Bullish	Bullish	1.13	1.13%	3.20%
WIKA	1,645	1,620	1,640	1,655	Bearish	Bearish	1.22	2.16%	3.06%
WSBP	412	412	414	418	Bearish	Bullish	1.00	1.46%	3.01%
WSKT	2,410	2,400	2,417	2,440	Bullish	Bullish	1.23	1.67%	3.16%
<b>INFRASTRUCTURE</b>									
<b>Energy, Telecommunication, Transportation &amp; Highway, Non Building Construction</b>									
PGAS	2,200	2,180	2,210	2,250	Bullish	Bullish	1.38	3.21%	3.69%
JSMR	4,660	4,590	4,650	4,700	Bullish	Bullish	1.12	2.40%	2.43%
EXCL	2,560	2,560	2,677	2,910	Bullish	Bullish	1.35	13.67%	3.87%
TLKM	3,770	3,770	3,790	3,830	Bullish	Bullish	1.19	1.59%	1.96%
TRAM	370	370	373	380	Bullish	Bullish	1.04	2.70%	8.86%
INDY	3,930	3,920	4,047	4,130	Bullish	Bullish	0.93	5.36%	5.39%
<b>FINANCE</b>									
<b>Bank &amp; Other Financing</b>									
BBCA	22,975	22,900	23,008	23,150	Bullish	Bullish	0.97	1.09%	1.78%
BBNI	8,450	8,250	8,392	8,475	Bullish	Bearish	1.23	2.73%	2.42%
BBRI	3,270	3,160	3,233	3,270	Bullish	Bullish	1.33	3.48%	2.04%
BBTN	3,070	3,000	3,057	3,100	Bullish	Bearish	1.29	3.33%	2.96%
BJBR	2,130	2,060	2,127	2,190	Bullish	Bullish	0.64	6.31%	4.11%
BMRI	7,375	7,325	7,367	7,400	Bullish	Bullish	1.31	1.02%	2.22%
<b>TRADE &amp; SERVICE</b>									
<b>Investment Company &amp; Wholesale</b>									
AKRA	4,750	4,710	4,750	4,790	Bearish	Bearish	1.07	1.70%	2.92%
UNTR	36,175	35,475	35,983	36,300	Bullish	Bullish	1.36	2.33%	3.10%
LPPF	8,925	8,925	9,025	9,225	Bullish	Bearish	1.16	3.36%	3.61%
BMTR	550	535	548	560	Bearish	Bullish	1.03	4.67%	3.97%
MNCN	1,190	1,185	1,200	1,225	Bullish	Bullish	1.18	3.38%	3.61%
SCMA	2,390	2,350	2,380	2,400	Bearish	Bearish	1.08	2.13%	3.47%
MYRX	132	131	132	134	Bearish	Bearish	0.79	2.29%	3.93%

Sumber: Lautandhana Securindo

Note:

1. Bila harga OPEN pada perdagangan hari ini lebih besar (kecil) daripada nilai PIVOT, maka terdapat kemungkinan saham tersebut akan berpotensi menguat (melemah) pada perdagangan hari ini.
2. Beta diatas 1 (b>1) mengindikasikan adanya kemungkinan saham tersebut bergerak melebihi pergerakan pasar. (jika kondisi pasar (IHSG) dalam keadaan *bullish* (*bearish*) maka saham tersebut kemungkinan akan naik (turun) melebihi kenaikan (penurunan) pasar)
3. Bila trend daily dan weekly menunjukkan *bullish* (*bearish*), maka besar kemungkinan saham tersebut akan menguat (melemah)
4. *Daily Volatility* merupakan historis dari keuntungan maksimum maupun kerugian maksimum yang dapat diterima investor dalam 1 hari perdagangan. (**Last:** historis volatilitas pada perdagangan kemarin, **Average:** rata-rata volatilitas per hari selama 1 tahun perdagangan)



Wisma Keia 15<sup>th</sup> floor  
 Jl. Jendral Sudirman Kav. 3  
 Jakarta 10220  
 T +62 21 5785 1818  
 F +62 21 5785 1637

## EQUITY DIVISION

### Jakarta Branch Pluit

Kawasan CBD Pluit Blok A No.20  
 Jl. Pluit Selatan Raya No.1  
 Jakarta Utara 14440  
 T +6221 6667 5345  
 F +6221 6667 5234

### Kelapa Gading

Sentra Bisnis Artha Gading  
 Jl. Boulevard Artha Gading Blok A6B Kav.7  
 Kelapa Gading Barat  
 Jakarta Utara 14240  
 T +6221 4585 6402  
 F +6221 4587 3961

### Puri

Rukan Grand Taman Aries Niaga Blok G1 No.11  
 Jl. Taman Aries Kembangan  
 Jakarta Barat 11620  
 T +6221 2931 9515  
 F +6221 2931 9516

### Others Branch Bandung

Komplek Paskal Hypersquare  
 Blok C No. 15, Kebon Jeruk  
 Bandung 40181  
 T +6222 8606 1027  
 F +6222 8606 0684

### Medan

Jl. Cut Mutia No.15B  
 Medan 20152  
 T +6261 451 8855  
 F +6261 455 1833

### Surabaya Branch

Ruko Permata Bintoro  
 Jl. Ketampon Kav.1-2  
 Surabaya  
 T +6231 562 2555  
 F +6231 567 1398

---

## DISCLAIMER

This report has been prepared by PT. Lotus Andalan Sekuritas on behalf of itself and its affiliated companies and is provided for information purposes only. Under no circumstances is it to be used or considered as an offer to sell, or a solicitation of any offer to buy. This report has been produced independently and the forecasts, opinions and expectations contained herein are entirely those of PT. Lotus Andalan Sekuritas.

While all reasonable care has been taken to ensure that information contained herein is not untrue or misleading at the time of publication, PT. Lotus Andalan Sekuritas makes no representation as to its accuracy or completeness and it should not be relied upon as such. This report is provided solely for the information of clients of PT. Lotus Andalan Sekuritas who are expected to make their own investment decisions without reliance on this report. Neither PT. Lotus Andalan Sekuritas nor any officer or employee of PT. Lotus Andalan Sekuritas accept any liability whatsoever for any direct or consequential loss arising from any use of this report or its contents. PT. Lotus Andalan Sekuritas and/or person connected with it may have acted upon or used the information herein contained, or the research or analysis on which it is based, before publication.