

MARKET VIEW

COMPOSITE



Sumber: MetaStock

IHSG berhasil menguat kembali di perdagangan kemarin sebesar 0.46% atau 26.65 poin dan ditutup di level 5,818.55. Minat beli asing tercatat mulai kembali mendukung penguatan IHSG di perdagangan kemarin sebesar Rp.194.67 miliar. Dan dari sekitar 467 saham yang kemarin aktif di perdagangan sekitar 124 saham menguat, 211 saham terkoreksi, dan 132 saham tidak mengalami perubahan. Secara keseluruhan pergerakan IHSG di perdagangan hari ini diperkirakan masih akan berfluktuatif dikisaran:

Support : 5,774.17
Resistance : 5,863.20

Close	Point	%Change	52 Weeks Return	Market Caps
5,818.55	26.65	0.46%	20.86%	6,372.26
Active Stock			Trading Volume	Trading Value
Up	Down	Unchange	17.52	10.38
124	211	132		

Sumber: IQPlus

STOCKS ANALYSIS

ADARO ENERGY (ADRO)



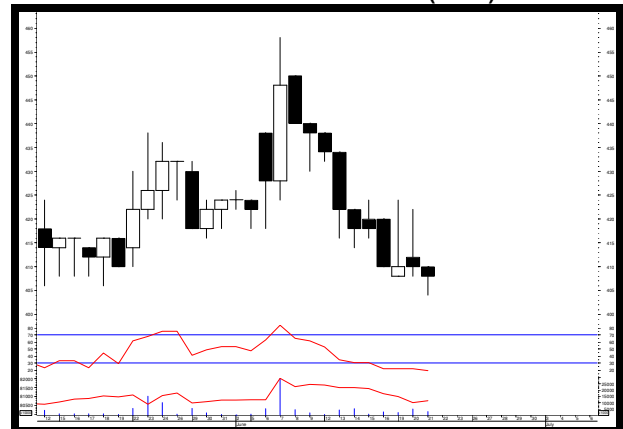
Sumber: MetaStock

Rekomendasi: Trading Buy

Resistance	2	: 1645
	1	: 1635
Support	1	: 1595
	2	: 1580

Trading range sementara dikisaran level 1565 – 1660. Bila berhasil menembus dan bertahan di atas level 1660 membuka peluang untuk menguji kisaran level 1720 sebagai target terdekat sementara.

INTILAND DEVELOPMENT (DILD)



Sumber: MetaStock

Rekomendasi: Buy on Weakness

Resistance	2	: 422
	1	: 410
Support	1	: 404
	2	: 398

Harga saat ini masih berada di area jenuh jual (*oversold*). Namun selama masih di bawah level 410 masih berpeluang untuk menguji level 386 sebagai target koreksi sementara.

ASTRA AGRO LESTARI (AALI)



Sumber: MetaStock

Rekomendasi: Trading Buy

Resistance	2	:	14725
	1	:	14700
Support	1	:	14350
	2	:	14325

Target sementara dikisaran level 15025 bila harga berhasil bertahan di atas level 14700.

WASKITA KARYA (WSKT)



Sumber: MetaStock

Rekomendasi: Trading Buy

Resistance	2	:	2350
	1	:	2340
Support	1	:	2290
	2	:	2270

Bila harga berhasil menguat dan bertahan di atas level 2350 membuka peluang untuk menguji kisaran level 2400 sebagai target sementara.

RAMAYANA LESTARI SENTOSA (RALS)



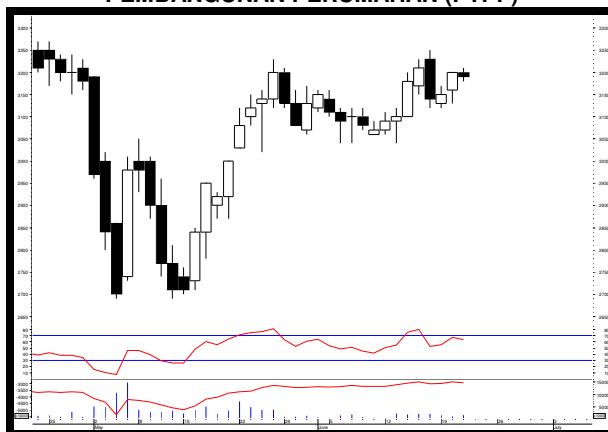
Sumber: MetaStock

Rekomendasi: Buy on Weakness

Resistance	2	:	1255
	1	:	1230
Support	1	:	1210
	2	:	1200

Terbentuknya pola *hammer* di perdagangan kemarin membuat adanya peluang penguatan harga sesaat di perdagangan hari ini.

PEMBANGUNAN PERUMAHAN (PTPP)



Sumber: MetaStock

Rekomendasi: Trading Buy

Resistance	2	:	1910
	1	:	1900
Support	1	:	1835
	2	:	1810

Harga masih berkonsolidasi dalam rentang 3070 – 3210.

PERUSAHAAN GAS NEGARA (PGAS)



Sumber: MetaStock

Rekomendasi: Buy on Weakness

Resistance	2	:	2360
	1	:	2340
Support	1	:	2280
	2	:	2270

Terbentuknya pola *double bottom* di perdagangan kemarin membuat adanya peluang penguatan sesaat di perdagangan hari ini.

UNILEVER INDONESIA (UNVR)



Sumber: MetaStock

Rekomendasi: Trading Buy

Resistance	2	:	49500
	1	:	49000
Support	1	:	48025
	2	:	47500

Selama masih dapat bertahan di atas level 48850, masih terbuka peluang untuk menguji kisaran level 49600 – 50850 sebagai target sementara.

LQ45 TRADING GUIDE

Ticker	Closing	Support	Pivot	Resistance	Trend		Daily Beta	Daily Volatility	
					Daily	Weekly		Last	Average
AGRICULTURE									
Plantation & Others									
AALI	14,700	14,350	14,583	14,700	Bullish	Bullish	0.96	2.44%	3.08%
LSIP	1,375	1,360	1,375	1,390	Bearish	Bearish	0.88	2.21%	3.47%
SSMS	1,600	1,545	1,582	1,600	Bearish	Bearish	0.70	3.56%	3.06%
CPIN	3,080	3,080	3,100	3,140	Bearish	Bearish	1.60	1.95%	3.50%
MINING									
Coal, Oil & Gas, Metal & Other Resources									
ADRO	1,595	1,595	1,608	1,635	Bullish	Bearish	1.30	2.51%	4.17%
BUMI	352	346	352	358	Bullish	Bullish	0.72	3.47%	4.45%
PTBA	11,850	11,675	11,792	11,850	Bullish	Bullish	1.09	1.50%	3.84%
ELSA	274	274	275	278	Bearish	Bearish	1.27	1.46%	4.53%
ANTM	695	690	700	715	Bearish	Bearish	0.96	3.62%	3.93%
INCO	1,885	1,880	1,887	1,895	Bearish	Bearish	1.30	0.80%	4.26%
BASIC INDUSTRY									
Cement & Others									
INTP	18,700	18,300	18,567	18,700	Bullish	Bullish	1.30	2.19%	2.78%
SMGR	10,200	9,975	10,125	10,200	Bullish	Bullish	1.27	2.26%	2.70%
MISC.INDUSTRY									
Otomotif & Manufacturing of Garments									
ASII	8,900	8,725	8,883	9,025	Bullish	Bearish	1.37	3.44%	2.71%
SRIL	324	322	325	330	Bullish	Bullish	1.06	2.48%	5.28%
CONSUMER GOODS									
Foods, Cigarette, Pharmacy & Others									
ICBP	8800	8700	8775	8825	Bullish	Bullish	1.00	1.44%	2.61%
INDF	8,500	8,400	8,483	8,550	Bullish	Bullish	1.33	1.79%	2.70%
UNVR	49,000	48,025	48,675	49,000	Bullish	Bullish	1.06	2.03%	2.11%
HMSP	3,840	3,810	3,833	3,850	Bearish	Bearish	0.83	1.05%	2.28%
GGRM	78,400	77,775	78,525	79,400	Bearish	Bearish	1.12	2.09%	2.63%
KLBF	1,625	1,600	1,617	1,625	Bullish	Bullish	1.15	1.56%	2.67%
PROPERTY & CONSTRUCTIONS									
ASRI	318	316	318	320	Bearish	Bearish	1.33	1.27%	3.36%
BSDE	1,805	1,785	1,800	1,810	Bearish	Bearish	1.47	1.40%	3.12%
LPKR	660	635	653	665	Bullish	Bullish	0.95	4.72%	3.38%
PPRO	224	222	225	228	Bearish	Bearish	1.11	2.70%	4.67%
PWON	610	600	607	610	Bearish	Bearish	1.39	1.67%	3.71%
SMRA	1,290	1,275	1,287	1,295	Bullish	Bearish	1.48	1.57%	3.62%
ADHI	2,150	2,140	2,160	2,190	Bearish	Bearish	1.19	2.34%	3.37%
PTPP	3,190	3,180	3,193	3,210	Bullish	Bullish	1.00	0.94%	2.75%
WIKA	2,240	2,220	2,233	2,240	Bullish	Bearish	1.15	0.90%	2.98%
WSKT	2,320	2,290	2,317	2,340	Bullish	Bullish	0.99	2.18%	2.72%
INFRASTRUCTURE									
Energy, Telecommunication, Transportation & Highway, Non Building Construction									
PGAS	2,290	2,280	2,303	2,340	Bearish	Bearish	1.26	2.63%	3.30%
JSMR	5,425	5,275	5,375	5,425	Bullish	Bullish	1.11	2.84%	2.52%
EXCL	3,360	3,220	3,313	3,360	Bullish	Bullish	1.12	4.35%	3.99%
TLKM	4,520	4,460	4,503	4,530	Bullish	Bullish	1.05	1.57%	2.07%
FINANCE									
Bank & Other Financing									
BBCA	18,200	18,050	18,158	18,225	Bullish	Bullish	1.00	0.97%	1.85%
BBNI	6,625	6,575	6,617	6,650	Bullish	Bullish	1.27	1.14%	2.65%
BBRI	15,300	14,800	15,133	15,300	Bullish	Bullish	1.39	3.38%	2.34%
BBTN	2,670	2,630	2,657	2,670	Bullish	Bearish	1.06	1.52%	2.88%
BMRI	12,700	12,425	12,608	12,700	Bullish	Bullish	1.32	2.21%	2.32%
TRADE & SERVICE									
Investment Company & Wholesale									
AKRA	6,600	6,375	6,525	6,600	Bullish	Bullish	0.79	3.53%	3.17%
UNTR	27,200	26,575	26,992	27,200	Bullish	Bearish	1.27	2.35%	3.29%
LPPF	14,250	14,175	14,275	14,400	Bearish	Bearish	1.24	1.59%	3.24%
MNCN	1,895	1,835	1,877	1,900	Bearish	Bearish	1.35	3.54%	3.96%
SCMA	2,600	2,590	2,627	2,690	Bearish	Bearish	1.26	3.86%	3.55%
MYRX	131	129	132	135	Bullish	Bullish	0.71	4.65%	3.39%

Sumber: Lautandhana Securindo

Note:

- Bila harga OPEN pada perdagangan hari ini lebih besar (kecil) daripada nilai PIVOT, maka terdapat kemungkinan saham tersebut akan berpotensi menguat (melemah) pada perdagangan hari ini.
- Beta diatas 1 ($\beta > 1$) mengindikasikan adanya kemungkinan saham tersebut bergerak melebihi pergerakan pasar.
- Bila kondisi pasar (IHSG) dalam keadaan *bullish* (*bearish*) maka saham tersebut kemungkinan akan naik (turun) melebihi kenaikan (penurunan) pasar)
- Bila trend daily dan weekly menunjukkan bullish (bearish), maka besar kemungkinan saham tersebut akan menguat (melemah)
- Daily Volatility* merupakan historis dari keuntungan maksimum maupun kerugian maksimum yang dapat diterima investor dalam 1 hari perdagangan. (**Last:** historis volatilitas pada perdagangan kemarin, **Average:** rata-rata volatilitas per hari selama 1 tahun perdagangan)



Wisma Keia 15th floor
 Jl. Jendral Sudirman Kav. 3
 Jakarta 10220
 T +62 21 5785 1818
 F +62 21 5785 1637

EQUITY DIVISION

Jakarta Branch Pluit

Kawasan CBD Pluit Blok A No.20
 Jl. Pluit Selatan Raya No.1
 Jakarta Utara 14440
 T +6221 6667 5345
 F +6221 6667 5234

Kelapa Gading

Sentra Bisnis Artha Gading
 Jl. Boulevard Artha Gading Blok A6B Kav.7
 Kelapa Gading Barat
 Jakarta Utara 14240
 T +6221 4585 6402
 F +6221 4587 3961

Puri

Rukan Grand Taman Aries Niaga Blok G1 No.11
 Jl. Taman Aries Kembangan
 Jakarta Barat 11620
 T +6221 2931 9515
 F +6221 2931 9516

Others Branch Bandung

Komplek Paskal Hypersquare
 Blok C No. 15, Kebon Jeruk
 Bandung 40181
 T +6222 8606 1027
 F +6222 8606 0684

Medan

Jl. Cut Mutia No.15B
 Medan 20152
 T +6261 451 8855
 F +6261 455 1833

Surabaya Branch

Ruko Permata Bintoro
 Jl. Ketampon Kav.1-2
 Surabaya
 T +6231 562 2555
 F +6231 567 1398

DISCLAIMER

This report has been prepared by PT. Lautandhana Securindo on behalf of itself and its affiliated companies and is provided for information purposes only. Under no circumstances is it to be used or considered as an offer to sell, or a solicitation of any offer to buy. This report has been produced independently and the forecasts, opinions and expectations contained herein are entirely those of PT. Lautandhana Securindo.

While all reasonable care has been taken to ensure that information contained herein is not untrue or misleading at the time of publication, PT. Lautandhana Securindo makes no representation as to its accuracy or completeness and it should not be relied upon as such. This report is provided solely for the information of clients of PT. Lautandhana Securindo who are expected to make their own investment decisions without reliance on this report. Neither PT. Lautandhana Securindo nor any officer or employee of PT. Lautandhana Securindo accept any liability whatsoever for any direct or consequential loss arising from any use of this report or its contents. PT. Lautandhana Securindo and/or person connected with it may have acted upon or used the information herein contained, or the research or analysis on which it is based, before publication.